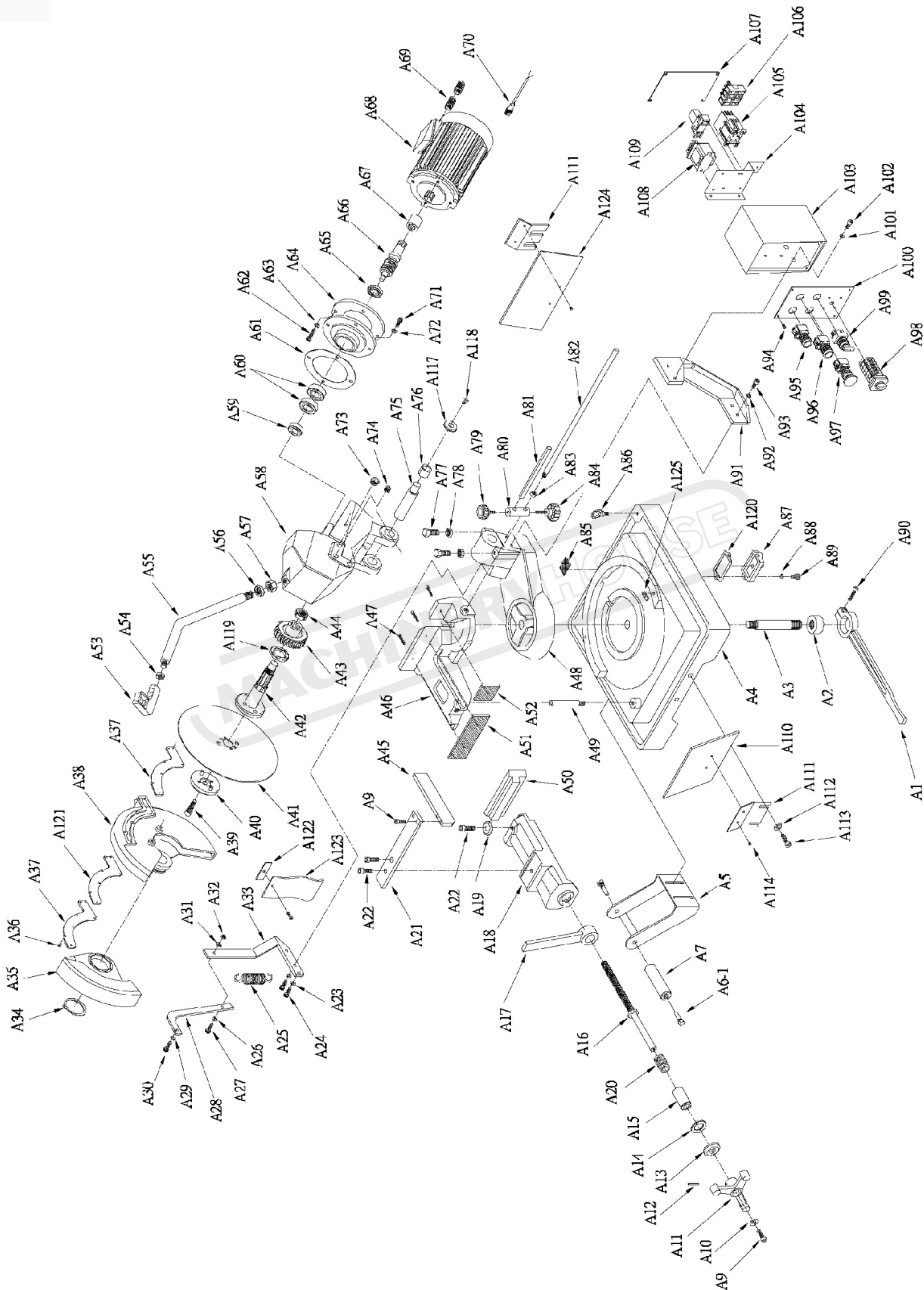


12 EXPLOSION DRAW AND PART LISTS

12.1 Explosion draw A



12.2 Part List A

Item	Description	Size	Q'TY
A01	Lock handle		1
A02	Lock Nut		1
A03	Shaft		1
A04	Machine base		1
A05	Roller bracket		1
A6-1	Hex head screw		2
A07	Roller		1
A08	C-clip	S-12	2
A09	Hex socket cap screw	M8x20	1
A10	Washer	5/16"	1
A11	Handle wheel		1
A12	Pin		1
A13	Bearing bushing		1
A14	Bearing		1
A15	Bushing		1
A16	Leading screw		1
A17	Lock handle		1
A18	Sliding vise		1
A19	Washer		1
A20	Spring		1
A21	Plate		1
A22	Hex socket cap screw	M12x25	2
A23	Washer	5/16"	2
A24	Hex socket cap screw	M8x20	2
A25	Spring		1
A26	Washer	5/16"	1
A27	Hex socket cap screw	M8x20	1
A28	Switching handle		1
A29	Washer	1/4"	1
A30	Hex socket cap screw	M6x12	1
A31	Washer	1/4"	1
A32	Nut	M8	1
A33	Switching plate		1
A34	C-clip		
A35	Blade shield		1
A36	Screw	M5x10	7
A37	Plate		
A38	Blade cover		1
A39	Hex socket cap screw	M12x35	1
A40	Fixing flange		1
A41	Saw blade		1

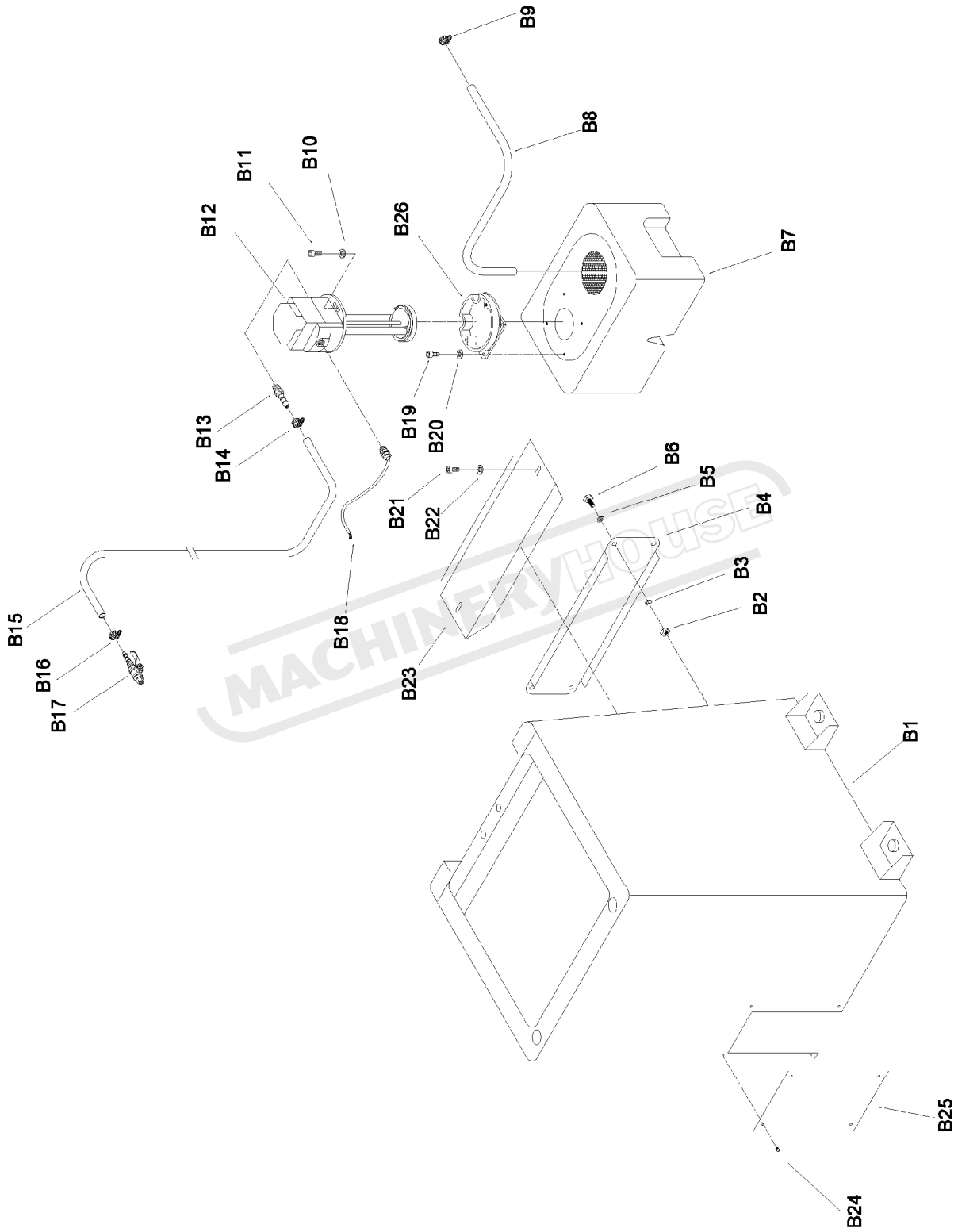
Item	Description	Size	Q'TY
A42	Spindle shaft		1
A43	Worm gear		1
A44	Lock Nut		1
A45	Stopper		1
A46	Vise bench		1
A47	Hex socket cap screw	M5x25	3
A48	Swing arm (base)		1
A49	Support rod		1
A50	Vise clamp		1
A51	Groove jaw		1
A52	Small groove jaw		1
A53	Trigger switch with handle		1
A54	Nut	M10	1
A55	Control handle rod		1
A56	Nut	M20	1
A57	Nut	M20	1
A58	Machine head		1
A59	Ball bearing	6205zz	1
A60	Ball bearing	6301zz	1
A61	Rubber sheet		1
A62	Hex cap screw	M8x20	4
A63	Washer	5/16"	4
A64	Flange		1
A65	Oil seal		1
A66	Worm shaft		1
A67	Coupling		1
A68	Motor		1
A69	Wire terminal clamp		4
A70	Control wire		1
A71	Hex cap screw	M8x20	4
A72	Washer	5/16"	4
A73	Oil pilot	PT1/2"	1
A74	Set screw	PT1/4"	2
A75	Shaft		1
A76	Bushing		1
A77	Hex cap screw	M12x55	1
A78	Nut	M12	1
A79	Lock bolt with knob		1
A80	Length setting rods bracket		1
A81	Upper length setting rod		1
A82	Lower length setting rod		1

Item	Description	Size	QTY
A83	Nut		1
A84	Lock bolt with knob		1
A85	Filter plate		1
A86	Lift ring		3
A87	Drainage		1
A88	Washer	5/16"	2
A89	Hex socket cap screw	M8x25	2
A90	Hex socket cap screw		1
A91	Supporter		1
A92	Washer	5/16"	2
A93	Hex cap screw	M8x20	2
A94	Screw	M5	4
A95	Stop button		1
A96	Start button		1
A97	Emergency switch		1
A98	2/4P selection switch		1
A99	Pump selection switch		1
A100	Control box panel		1
A101	Washer	5/16"	2
A102	Hex socket cap screw	M8x20	2
A103	Electric control box		1
A104	Control box button plate		1
A105	Magnetic connector		1
A106	Fuse set		1
A107	Cover plate		1
A108	Transformer		1
A109	Relay		1
A110	Plate		1
A111	Support plate		2
A112	Washer	5/16"	2
A113	Hex socket cap screw	M8x16	2
A114	Screw	M5	2
A117	Cover		2
A118	Screw		2
A119	Oil seal		1
A120	Rubber plate		1
A121	Rubber plate		1
A122	Holder plate		1
A123	Anti-dust plate		1
A124	Plate		1

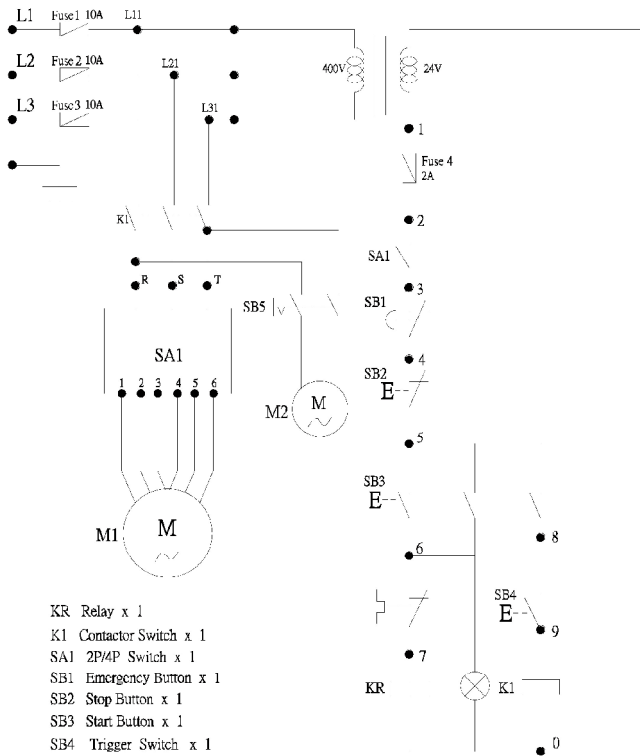
Item	Description	Size	QTY
B01	Stand		1
B02	Nut	M6	4
B03	Washer	1/4"	4
B04	Support plate		1
B05	Washer	1/4"	4
B06	Hex cap screw	M6x15	4
B07	Coolant tank		1
B08	Hose		1
B09	Hose clamp		1
B10	Washer	1/4"	2
B11	Hex socket cap screw	M6x16	2
B12	Coolant pump		1
B13	Connecting bolt		1
B14	Hose clamp		1
B15	Hose		1
B16	Hose clamp		1
B17	Valve		1
B18	Wire		1
B19	Hex cap screw	M6x15	4
B20	Washer	1/4"	4
B21	Hex cap screw	M6x15	2
B22	Washer	1/4"	2
B23	Support plate		1
B24	Screw	M5x6	4
B25	Cover plate		1
B26	Collar		1

12.3 Part List B

12.4 Explosion draw B

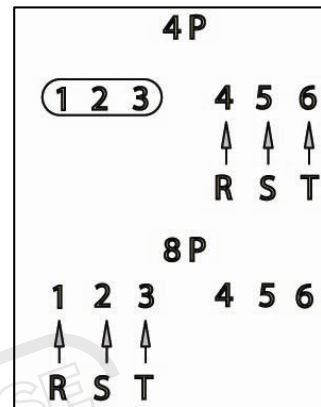
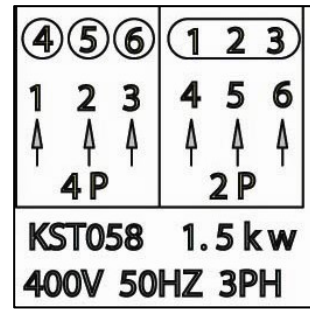


12.5 WIRING DIAGRAM AND PARTS LIST



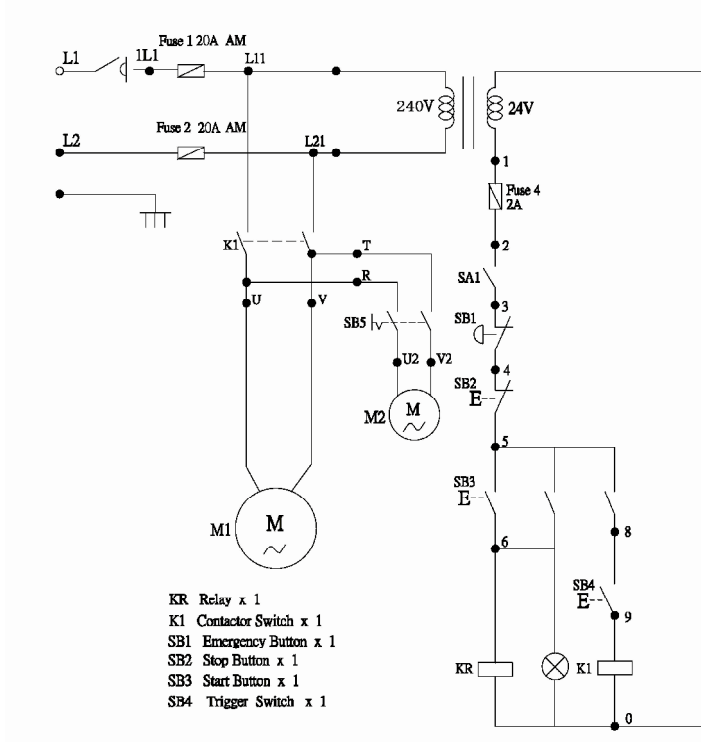
- KR Relay x 1
- K1 Contactor Switch x 1
- SA1 2P/4P Switch x 1
- SB1 Emergency Button x 1
- SB2 Stop Button x 1
- SB3 Start Button x 1
- SB4 Trigger Switch x 1

Motor connection



Item name	Description and function	Technical data	Quantity	Supplier	Suppliers reference	Remarks
FU1 FU2 FU3 FU4	Fuses	30x6.2mm 250V 15A 15A 15A	1 1 1	JENN FENG	S15A	
	Fuses base	2A 10A 4P	1 1		FSB-104	
K1	Contactor	Coil 24V It=25A 220V 2.2kw 400V 4.0kw	1	NHD	C-12D	CE ICE 158-1 BS 5424-1 VDE 0660 J13 8325
KR	Relay	250VAC 5A	1	BETA	MY-2N AC 24V	CE CSA
TC	Transformer	35VA 230/24V ,400V/24V	1	TAI CHUNG	66 , 57	
SB1	Emergency Stop	250V 6A	1	KEDU	HY57B	CE CUS
SB2 SB3	OFF button Start button	250V 6A	1 1	MACK	ABF-22Φ1b ABLFS-22Φ1a 30V	CE CUS
SB4	Trigger switch	15A 1/2HP 125 250VAC 0.6A 125VDC 0.3A 250VDC	1	OMRON	V-15-1A5	CE CUS
SB5	Pump switch	250V	1	GIKOKA	OSS-22Φ	CE CUS
SA1	Hi/Low speed select switch	440V 5kw	1	KEDU	ZH-HC-5	CE CUS
M1	Motor	400V,230V/ (1.5kw) 2HP 3ph/2P/4P 400V,230V/ (1.5kw)2HP 3ph/4P/8P	1	KUOSHUAY	KST058 KST063	
M2	Coolant pump	400V / 3ph, 230V/1PH (0.09kw) 1/8HP	1	KUOSHUAY		

12.6 WIRING DIAGRAM AND PARTS LIST



Item name	Description and function	Technical data	Quantity	Supplier	Suppliers reference	Remarks
FU1 FU2 FU3	Fuses	20A 20A 2A	1 1 1	BOSS MANN Thining ETI	FNQ-aM FNQ-aM KTK-gG VKC-10	CE CSA CUS E300304
K1	Contactor	Coil 24V It=25A 220V 2.2kw 400V 4.0kw	1	NHD	C-18D	CE ICE 158-1 BS 5424-1 VDE 0660 JI3 8325
KR	Relay	250VAC 5A	1	BETA	BMV-5-2C AC 24V	CE CUS-E115915
TC	Transformer	35VA 220 / 24V	1	TAI CHUNG	PT-66	
SB1	Emergency Stop	250V 6A	1	KEDU	HY57B	CE CUS
SB2 SB3	OFF button Start button	250V 6A 2a	1 1	MACK	ABF-22Φ1b ABLFS-22Φ1a 30V	CE CUS
SB4	Trigger switch	15A 1/2HP 125 250VAC 0.6A 125VDC 0.3A 250VDC	1	OMRON	V-15-1A5	CE CUS
SB5	Pump switch	250V	1	GIKOKA	OSS-22Φ	CE CUS
MB	Protector	30A 250V	1	YEU SHENG	OC	CE UL CUL
M1	Motor	220V / 2.5 HP 1ph / 4Pole	1	KAI SHEN		
M2	Coolant pump	220V / 1/8 HP 1ph / 4Pole	1	KAI SHEN		